

DATA SHEET

# Pitney Bowes Spectrum™ Enterprise Data Quality Solution

UNIVERSAL ADDRESSING MODULE  
AUSTRALIA



## Key Components

- **Get Candidate Addresses:**  
Returns a list of possible matches for a given address
- **Get City State:**  
Returns the city and state for a given postal code
- **Get Postal Codes:**  
Returns the postal codes for a given city
- **Validate Postal Address:**  
Standardises addresses using Australian (AMAS), U.S., Canadian, and International postal data.
- **Validate Physical Address:**  
Standardise addresses and geocode them using default address ranges for approximate location, or G-NAF(R) for precise locations of addresses.

## OVERVIEW

Validate and correct addresses both domestically and abroad. With the Pitney Bowes Spectrum Enterprise Data Quality Solution Universal Addressing Module you will have no problem meeting the Australia Post guidelines for address preparation for barcode creation, ensuring quality addressing, and qualification for discounts on PreSoft letter lodgements. The Universal Addressing Module automatically corrects, completes and formats address data in real time for all your mailings. You can earn greater postal discounts in the knowledge that your valuable communications reach intended recipients.

The Universal Address Module:

- The Universal Addressing Module provides the ability to validate physical address locations against the Geocoded National Address File (G-NAF(R)). This enables you to not only confirm the existence of a physical address, but precise geocodes of those addresses are also available for high fidelity Location Intelligence analysis.
- For postal address validation Spectrum Technology Platform 6 has been approved by Australia Post in accordance with the Address Matching Approval System (AMAS) for the 2009 and 2010 AMAS cycle.

Provides support for:

- English and French Address Formats in Canada
- International characters with umlauts and accents

## Increase Accuracy, Meet Standards and Save Time and Money

The Pitney Bowes Spectrum Enterprise Data Quality Solution Universal Addressing Module ensures accurate capture of customer addresses at the point of data entry. By preventing bad addresses from becoming part of your database, you can improve customer satisfaction, and your profitability, month after month.

The Universal Addressing Module can be used in batch mode, real-time mode, or as a hosted service (i.e., SaaS capability), depending on which option you need. All hosted services provide the same features and functionality as the local services.

### The AMAS Approved Advantage

The Spectrum Enterprise Data Quality Solution Universal Addressing Module is AMAS approved by Australia Post and meets all requirements of the AMAS program.

## Capitalise on More Reliable Address Data – Trust in the Pitney Bowes Spectrum™ Enterprise Data Quality Solution

Knowing your customers is key to growing customer relationships – and that means you need accurate, properly formatted addresses. The Pitney Bowes Spectrum Enterprise Data Quality Solution provides the data quality tools you need to create and maintain accurate rich customer information. With the Spectrum

# Pitney Bowes Spectrum™

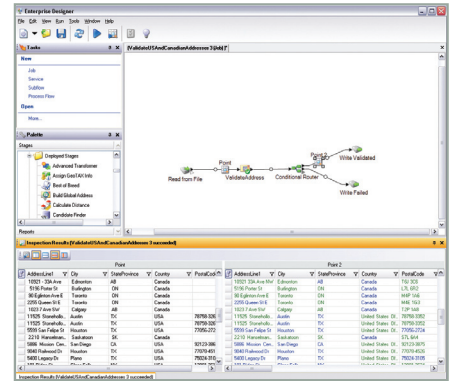
## Enterprise Data Quality Solution

### Universal Addressing Module

Enterprise Data Quality Solution, you can clean, match and consolidate customer data to leverage the most up-to-date, complete view of your customer across your organisation.

Supports Windows and Unix platforms, including 64 bit versions. Easy integration with enterprise applications and compatible with:

- Windows 2000/XP/2003
- Solaris – 9, 10
- HP-UX – 11.11, 11.23 (PA-RISC), 11.23i (Itanium)
- AIX – 5.3, 6.1
- Red Hat Linux – 4, 5.2
- Suse – 9, 10
- Client Tools (Windows Thick Client)
  - > Enterprise Designer – batch Flow Inspection
  - > Management Console
- Client APIs
  - > C, C++, COM, .Net, Java, XML
  - 32 bit (Windows & Unix)
  - 64 bit (Windows & Unix)
  - Web Services



Windows-based tools and drag-and-drop interface make it easy for you to quickly parse and format information into usable data fields.

#### ASIA-PACIFIC/AUSTRALIA

Level 7  
1 Elizabeth Plaza  
North Sydney NSW 2060  
main: 61.2.9437.6255  
fax: 61.2.9439.1773  
pbbi.australia@pb.com  
www.pbinsight.com.au

#### UNITED STATES

One Global View  
Troy, NY 12180-8399  
main: 1.800.327.8627  
fax: 1.518.285.6070  
pbbi.sales@pb.com  
www.pbinsight.com

#### EUROPE/UNITED KINGDOM

Minton Place  
Victoria Street  
Windsor, Berkshire SL4 1EG  
main: 44.1753.848200  
fax: 44.1753.621140  
pbbi.europe@pb.com  
www.pbinsight.co.uk

#### PITNEY BOWES BUSINESS INSIGHT

With the industry's most comprehensive set of solutions for maximising the value of customer data, Pitney Bowes Business Insight helps organisations more effectively locate, connect with and communicate to their customers in today's global markets.



#### The Pitney Bowes Spectrum™ Solutions and Business Services

##### Spectrum Enterprise Data Quality Solution

- Address Now
- Advanced Matching
- Universal Addressing
- Data Normalisation
- Universal Name

##### Spectrum Enterprise Location Intelligence Solution

- Enterprise Geocoding
- Enterprise Location Intelligence
- Enterprise Routing

##### Spectrum Enterprise Data Integration Solution

- Data Services for Oracle
- Data Services for Siebel
- Data Services for SFDC
- Data Services for SAP
- Sagent Dataflow

##### Spectrum Enterprise Data Governance Solution

- Profiler Plus
- Monitor Plus

##### Spectrum Business Services

- Enterprise Routing
- Global Sentry
- Enterprise Tax Management
  - > Sales & Use
  - > Payroll
  - > Personal Property
  - > Insurance Premium Tax
- Business Application Connectors
  - > Data Quality Connector for:
    - MySAP CRM v.5.0, v.6.0
    - MySAP ERP v.5.0, v.6.0
    - Siebel Enterprise Apps v.7.8, v.8.0
    - Siebel Industry Apps v.7.8, v.8.0

##### Spectrum OnDemand

