

DATA SHEET

# Encom™ GPinfo

THE DEFINITIVE SOURCE FOR AUSTRALASIAN PETROLEUM DATA.



## Summary

Widely regarded as the most accurate and up-to-date permit, well and company data for Australia, New Zealand and Papua New Guinea, Encom GPinfo is used by over 100 exploration and other industry-related companies both in Australia and overseas as the primary source of their petroleum data.

## Benefits

- Accurate, reliable, comprehensive database of Australasian petroleum exploration information.
- Powerful custom-built GIS for graphically viewing and manipulating data.
- Fully flexible range of installation options to suit all business models.

## OVERVIEW

Pitney Bowes Business Insight's Encom GPinfo is the leading desktop data visualisation and manipulation package for the Australasian petroleum industry.

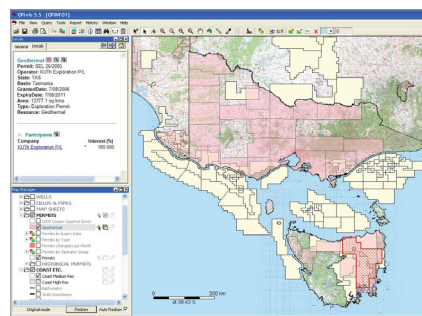
It combines a comprehensive database of petroleum exploration information with an attractive and easy to use graphical interface for viewing and manipulating the data.

GPinfo is widely recognised as the most accurate, complete and up-to-date source of petroleum information available.

## Subscription Service

GPinfo data updates are issued monthly via the internet, with regular software updates also provided on an ongoing basis.

Subscribers have a variety of installation options ranging from a standalone system on a single PC to a fully export-enabled system with access to complete history data running on a corporate network.



The outline of PEP 150 superimposed on the Topo 250K image available from Geoscience Australia.

## Data

- All current petroleum and geothermal permits with attributes including participants and percentage ownership, operator, expiry date and work commitments.
- All petroleum wells drilled in the region (over 15,000) with attributes including location, operator, spud and completion dates, result and status.
- Full company information including details of parent/subsidiary relationships and contact information for offices and key personnel.
- Oil and gas field boundaries, pipeline routes, map sheets, coastlines, state and offshore boundaries, bathymetry and major towns.

## GPinfo Online

A value-added service for GPinfo subscribers is the ability to access GPinfo data via the internet.

GPinfo Online suits users who don't need the full power of GPinfo but still need access to the GPinfo data.

GPinfo Online has an interface similar to other web-based applications.

## ASIA-PACIFIC/AUSTRALIA

Level 7  
1 Elizabeth Plaza  
North Sydney NSW 2060  
+61.2.9437.6255  
pbbi.australia@pb.com  
pbbi.singapore@pb.com  
pbbi.china@pb.com  
www.pbinsight.com.au

## UNITED STATES

One Global View  
Troy, NY 12180-8399  
+1.800.327.8627  
pbbi.sales@pb.com  
www.pbinsight.com

## CANADA

26 Wellington Street East  
Suite 500  
Toronto, ON M5E 1S2  
+1.800.327.8627  
pbbi.canada.sales@pb.com  
www.pbinsight.ca

## EUROPE/UNITED KINGDOM

Minton Place  
Victoria Street  
Windsor, Berkshire SL4 1EG  
+44.1753.848200  
pbbi.europe@pb.com  
www.pbinsight.co.uk

## Features

- **Graphical Interface**  
View and interrogate wells, permit polygons, seismic lines and other graphical data via an on-screen map.
- **Powerful Query Builder**  
Create multiple, persistent queries and perform data selections that are dynamic.
- **Hyperlinks**  
Explore the relationship between wells, permits and companies using intuitive data hyperlinks.
- **Data Import**  
Add your own data in any one of several industry standard formats such as SHP, MID/MIF and DXF.
- **Large Scale Imagery**  
Attach large scale, high resolution imagery.
- **Enhanced Output**  
Create reports, spreadsheets, maps and presentation quality graphics.
- **Data Export**  
Export graphical data for use in third party software such as Petrosys, ArcView, MapInfo Pro, Landmark, GeoQuest, AutoCad and ER Mapper.

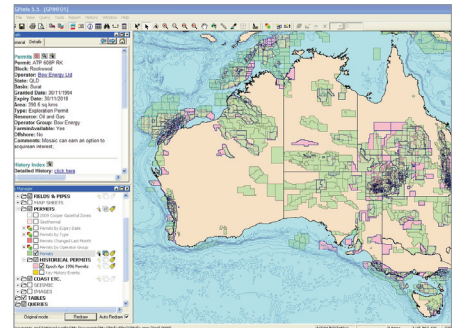
## History Dataset

The GPInfo History Dataset provides permit geometry and detailed permit ownership information going back to when the service began in 1991.

The History Dataset allows GPInfo users to perform the following operations:

- Generate a complete display of permits as they existed at any month from 1991 onwards.
- Click on a permit from the historical dataset and show the participants in that permit and their interests.
- Create queries that select specific historical permits eg. show me all the permits that Woodside operated in March 1998.
- Show a timeline of the history of a permit to reveal when ownership changes and partial relinquishments/extensions occurred.

The History Dataset is available as a supplementary dataset to the basic system.



Current Australian permit coverage (green) superimposed on April 1996 permits (pink).

TO LEARN MORE ABOUT ABOUT ENCOM GPINFO, EMAIL [INFO@GPinFO.COM.AU](mailto:INFO@GPinFO.COM.AU), VISIT [WWW.PBINSGHT.COM.AU](http://WWW.PBINSGHT.COM.AU) OR CALL +61.2.9437.6255.