

DATA SHEET

# MapInfo® Exponare® v4.5

EXPONARE IS THE ULTIMATE INFORMATION PORTAL MAKING CORPORATE DATA MORE MEANINGFUL FOR BETTER ANALYSIS AND IMPROVED DECISION MAKING.



## Summary

MapInfo® Exponare® is a configurable map driven application that provides a simple, point-and-click portal into your corporate data for internal and external customers.

Exponare provides a highly visual portal that makes corporate data more meaningful for analysis and decision making.

## Benefits

- Rapid deployment and quick return on investment
- Predefined queries, print templates, work contexts, application links
- Network load balanced deployments can grow to meet demand
- Live access to corporate data
- Point-and-Click interface extends location based data to all levels of the organisation
- Exponare integrates with other business applications to maintain continuity of business processes.

## OVERVIEW

Pitney Bowes Business Insight's MapInfo Exponare is an enterprise location intelligence solution which provides a means to access data within an organisation irrespective of its format (spatial or non-spatial). It integrates with relevant corporate applications and can be configured to suit a wide variety of users both inside and outside the organisation.

MapInfo Exponare is architected around a central web server which provides data and functionality to two user deployments, Exponare Enquiry and Exponare Public, to meet the needs of various user types.

### Exponare is...Configurable

The intuitive Configuration Manager provides administrators with a great deal of flexibility, without the need to write code. Administrators can configure user profiles to determine the functionality, data sets, queries, views, print templates and application links that each user or group of users can access. Exponare can be administered by a single administrator or group of administrators, all saving their changes simultaneously.

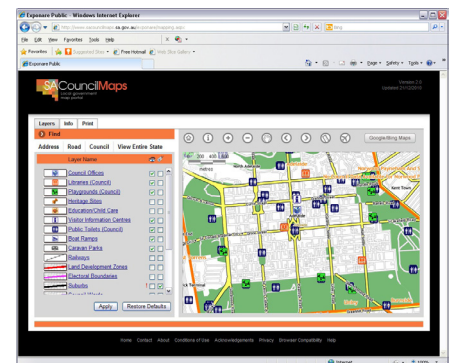
### Exponare is...Scalable

Exponare can be configured to run in a network load balanced environment. Increase in usage demand can be met effectively by increasing the available capacity in the server farm.

### Exponare is...Intuitive

The intuitive nature of Exponare's interface means that users of varying skill levels and experience can be made operational very quickly. Data sets, queries, print templates and map views are pre-configured by the

administrator to make it quick and easy for users to access and analyse data.



*Exponare Public can be used to provide information to customers and citizens via the web 24 x 7, therefore freeing up demands on customer service.*

### Exponare is...Powerful

Exponare provides a range of capabilities out of the box such as printing, thematics, queries, mail merge, redlining, favourites, views, application level linking, editing of attribute data and a range of mapping tools (zooming, selections, measuring distances, etc). The administrator can give users as much or as little functionality as required.

### Exponare is...An Information Portal

Exponare provides a map-based portal into an organisation's data, both spatial and non-spatial. Data is accessed where it lives so there is no need for duplication. A user can view all the information associated with a map object, regardless of where the data is stored (MapInfo tables, SQL Server, Oracle, Access, etc). Exponare can also link to third party applications, such as property and rating systems, to provide a seamless interface to all relevant information within an organisation. Exponare Public can be used to provide information to customers and citizens directly via the web.

# MapInfo® Exponare® v4.5

## What's New in Exponare v4.5?

MapInfo Exponare v4.5 has a key focus on integration and interoperability with greater ability to find and access data, including data from 'the cloud'.

**Tile server access** – users can now connect to a tile server to stream imagery data directly into Exponare, both Enquiry and Public. This provides fast, efficient access to the latest imagery, without the need to store it locally and manage updates manually. Access to Bing™ imagery is included in Exponare v4.5\*.

**Catalogue searching** – Exponare v4.5 makes it easier for users to find data and access metadata so they can determine if data is 'fit for purpose' before using it. Users can search CSW (Catalogue Web Services) catalogues created by MapInfo Manager using the same dialogues as MapInfo Professional®, ensuring consistency between products and improving usability for those who use both products.

**User interface update** – Exponare 4.5 has an updated user interface with new, modern buttons which facilitates ease of use and ease of learning. Exponare uses the same buttons as MapInfo Professional which means there

is a similar look and feel and user experience between the products.

**Exponare Public improvements** – The user experience has been improved for Exponare Public with new capabilities such as the ability to collapse the left panel to maximise the space for the map as well as map refresh enhancements.

Other improvements in version 4.5 include:

- Support for SQL Server 2008
  - Access both spatial and non-spatial data
  - Edit attribute data from SQL Server 2008
- Support for Oracle 10g and 11g
  - Access both spatial and non-spatial data
  - Edit attribute data from Oracle 10g and 11g
- Exponare Enquiry support for Windows 7
- Exponare Server support for Windows 2008 Server 64bit
- Support for Internet Explorer 9.0 and Firefox 3.6.

VISIT [WWW.PBINSIGHT.COM.AU](http://WWW.PBINSIGHT.COM.AU) OR CALL 02.9437.6255 FOR MORE INFORMATION.

### ASIA PACIFIC/AUSTRALIA

Level 7, 1 Elizabeth Plaza  
North Sydney NSW 2060  
Australia

+61.2.9437.6255

[pbbi.australia@pb.com](mailto:pbbi.australia@pb.com)  
[pbbi.singapore@pb.com](mailto:pbbi.singapore@pb.com)  
[www.pbinsight.com.au](http://www.pbinsight.com.au)

### UNITED STATES

One Global View  
Troy, NY 12180

+1.800.327.8627

[pbbi.sales@pb.com](mailto:pbbi.sales@pb.com)  
[www.pbinsight.com](http://www.pbinsight.com)

### CANADA

26 Wellington Street East  
Suite 500  
Toronto, ON M5E 1S2

+1.800.268.3282

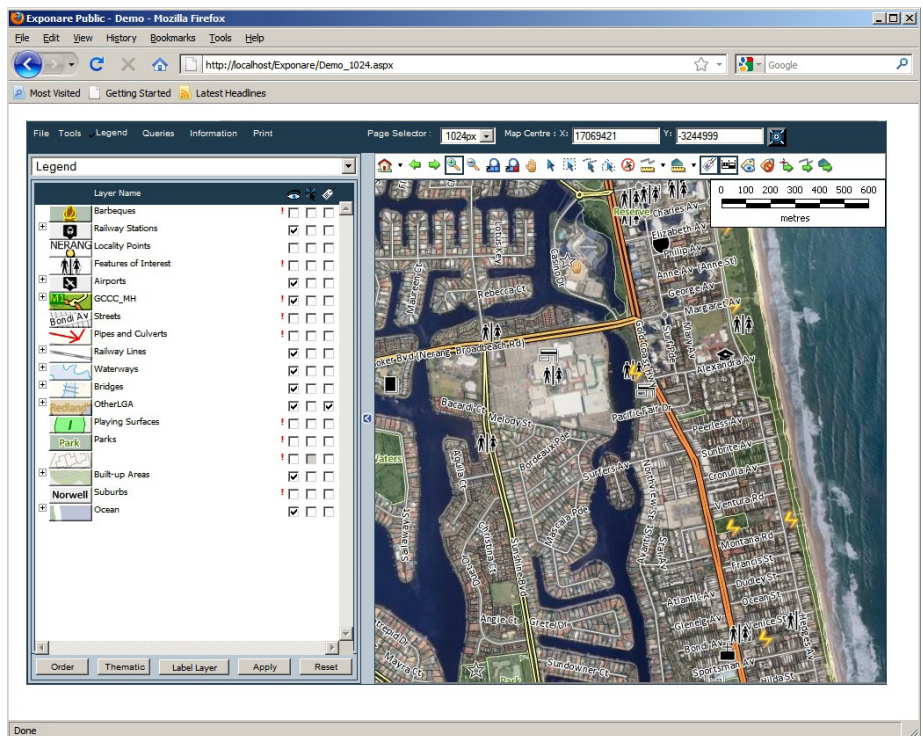
[pbbi.canada.sales@pb.com](mailto:pbbi.canada.sales@pb.com)  
[www.pbinsight.ca](http://www.pbinsight.ca)

### EUROPE/UNITED KINGDOM

Minton Place  
Victoria Street  
Windsor, Berkshire SL4 1EG  
United Kingdom

+44.800.840.0001

[pbbi.europe@pb.com](mailto:pbbi.europe@pb.com)  
[www.pbinsight.co.uk](http://www.pbinsight.co.uk)



Exponare users can access imagery from a tile server such as Bing™ Maps at the click of a button and overlay it with their vector data.

Every connection is a new opportunity™

\* A cost may be applicable to some customers.